

15-17 Eastgate Street, Bury St Edmunds, Suffolk, IP33 1XX  
Tel: 01284 760770  
bury@shiresestateagents.co.uk  
www.shiresresidential.com

**shires**

Estate & Letting Agents



## Stephensons Place, Bury St. Edmunds, Suffolk, IP32 6BF

**Rent - £1,500 PCM      Deposit - £1,730**

Modern town house with three double bedrooms in a prestigious residential development off Northgate Avenue within good access of the town centre, train station and amenities. The accommodation is set over three floors and offers Entrance Hall, Cloakroom, Sitting/Dining Room, Kitchen with integral appliances, Conservatory, Two First Floor Double Bedrooms, Family Bathroom, Second Floor Bedroom Suite with En Suite Shower Room. The property has a courtyard garden with double gates leading to the rear. There is an allocated parking space and parking in front of the property. Viewing is highly recommended.

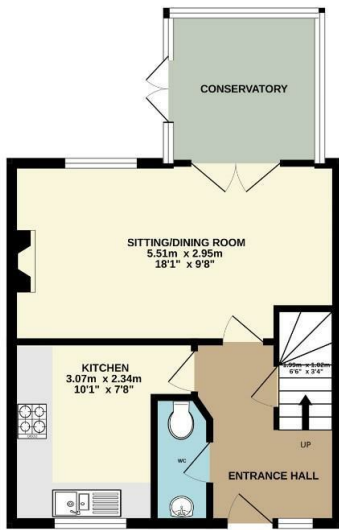
- MODERN THREE STOREY TOWN HOUSE
- ENTRANCE HALL, CLOAKROOM
- LOUNGE, CONSERVATORY
- 2 FURTHER DOUBLE BEDROOMS, BATHROOM
- GARDEN, ALLOCATED PARKING
- POPULAR RESIDENTIAL LOCATION
- KITCHEN/ DINING ROOM WITH APPLIANCES
- 2ND FLOOR DOUBLE BEDROOM WITH EN-SUITE
- UNFURNISHED, GAS CH, EPC 75, C
- AVAILABLE END AUGUST



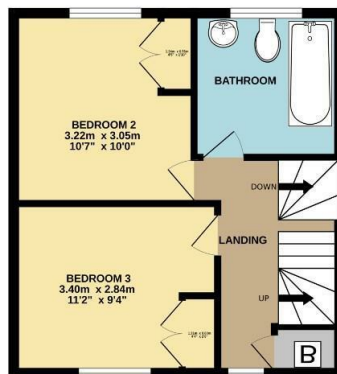
Council Tax Band: C - EPC Rating: C 76



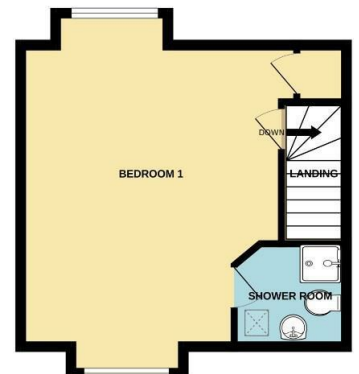
GROUND FLOOR



1ST FLOOR



2ND FLOOR



Whilst every attempt has been made to ensure the accuracy of the floorplan contained here, measurements of doors, windows, rooms and any other items are approximate and no responsibility is taken for any error, omission or mis-statement. This plan is for illustrative purposes only and should be used as such by any prospective purchaser. The services, systems and appliances shown have not been tested and no guarantee as to their operability or efficiency can be given.  
Made with Metropix ©2025

